

Models:

RT-MG-001/80DC – Water Bath for Specific Gravity Frame, 80 L capacity

Related products:

RT-MG-008/W – Widened Specific Gravity Frame

RT-MG-008/zC – Cradle for Specimens

Standards:

EN 12697-5, EN 12697-12, EN 12697-34
 ASTM D1559, ASTM D2041, ASTM D5581
 AASHTO T 209, AASHTO T 245

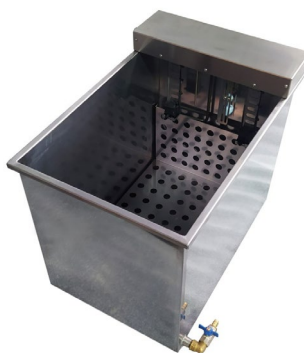
Description:

RT-MG-001/80DC is a water bath designed to be used with specific gravity frame or as stand-alone high capacity and deep enough water bath, ensures high accuracy and uniform temperature distribution due to two internal circulation pumps and a combination of high-precision temperature sensor and PID controller, that provides resolution ± 0.1 °C. The operating temperature range up to 60 °C.

The water bath is equipped with a safety water level sensor and a button to turn off heating and circulating to eliminate the effect of water fluctuations on hydrostatic weighing.

Made entirely of stainless steel and equipped with drain facility for easy water discharge.

Supplied complete with an internal perforated shelf.



RT-MG-001/80DC fitted in specific gravity frame RT-MG-008/W

Technical specifications:

Recirculation	two circulating water pumps
Capacity	80 L
Temperature range: ambient (5 °C) to	60 °C
Resolution	0.1 °C
Accuracy in the range of 25-60 °C	± 0.2 °C
Internal dimensions (LxWxH)	520x370x420 mm
External dimensions (LxWxH)	585x445x495 mm
Dimensions of the control unit (LxWxH)	165x155x165 mm
Weight (approx.)	25 kg
Max. power demand	1500 W
Power supply	220-230 V, 50 Hz, 1 Ph